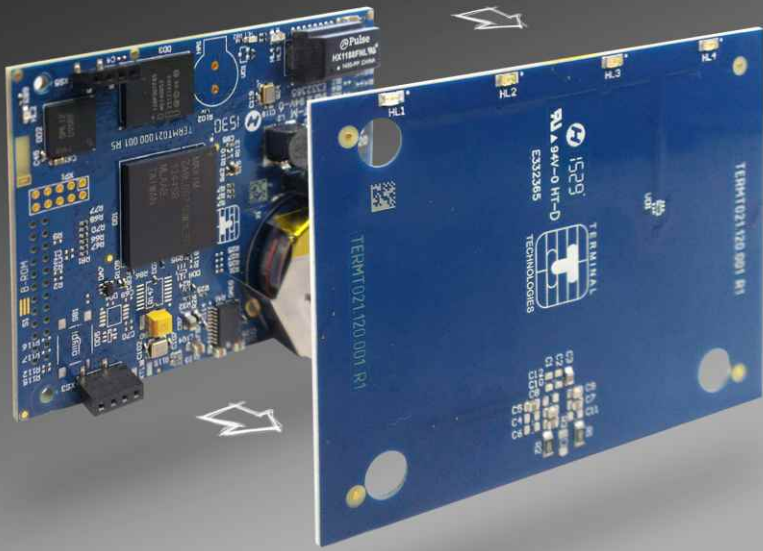


EPS for passenger fare collection



Embedded Payment Solutions (EPS) is a unique combination of certified payment hardware and smart software which brings convenience of EMV and MIFARE contactless card payments to passenger fare collection solution.

EPS is suitable for ticket vending kiosks, automated fare collection systems, and other unattended payment terminals used in mass transit.

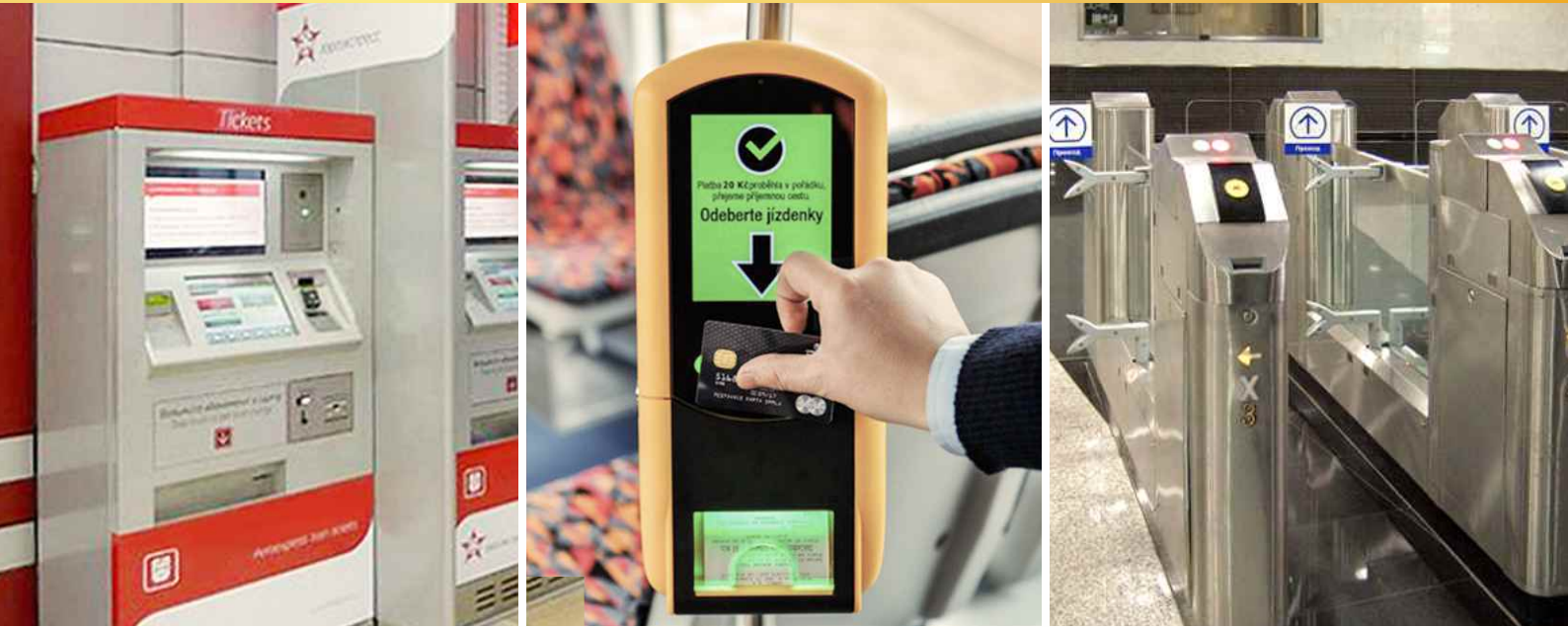
EPS with its ultra compact size and secured environment is designed for smooth and easy integration with ticket validators, driver's on-board PCs, access gates, and other transportation and ticketing equipment.

EPS hardware and software solution is fully certified by EMVCo company, and Visa / MasterCard card payment networks.



payments beyond cash

EPS for passenger fare collection



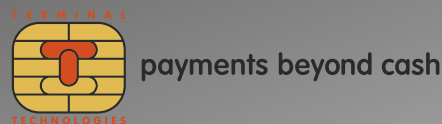
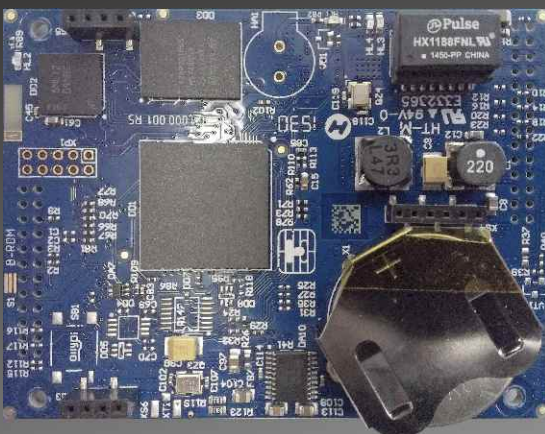
EPS solution is based on Terminal Technologies' T2100 contactless payment terminal.


T2100 product in brief



- compact size “all-in-one” contactless POS terminal
- EMV (PayPass, PayWave) and MIFARE (Classic, Ultralight, etc) contactless standards ready including NFC-capable mobile phones and wearable RFID devices
- ideal solution for low value payments, no PIN entry is required (up to 20 EUR or local currency equivalent)
- powerful CPU inside to support multi-application environment for loyalty programs, proprietary prepaid schemes, and NFC e-wallet solutions
- direct connection to acquirer host using Ethernet or GSM/GPRS with support of SSL
- UART, USB, RS232 interface for integration with external fare collection solution
- optional interfaces to turnstile hardware for public transport access control solutions such as metro, or regional trains

Technical specifications

- Contactless interface - ISO 14443-3/4, MIFARE Classic, Ultralight / Ultralight C, Plus, Desfire, SmartMX
- CPU & memory - ARM9, OS Secure Linux, 128MB Flash, 64MB SDRAM
- Interfaces - RS232, USB, Ethernet, GSM/GPRS, solid state relay for turnstile control
- SAM card interface - 2-4 SAM slots (ID000 ISO-7810 form-factor)
- Dimensions
 - CPU board (56x70x11 mm)
 - antenna board (82x72x8 mm)
 - comm interface board (56x85x11 mm)
 - Note: terminal dimensions and power voltage may vary depending on integration requirements
- Power & consumption - supply voltage 12V DC, less than 500 mA
- Environmental - operating temperature -30 ... +70C
- EMVCo L1 certified hardware
- EMVCo L2 certified Visa PayWave & MasterCard PayPass software



 Zlaty Andel office centre,
Nadrazni 344/23, Prague 5, 150 00,
Czech Republic

 www.termt.eu
 sales@termt.com